

SAMUEL & SONS



VOLUME III

SPRING/PRINTEMPS 2020





SAMUEL & SONS
SPRING/PRINTEMPS 2020





*Antoinette
Embroidered Border/
Antoinette Galon Brodé
in Antique*

CONTENTS:

Antoinette 5-6 / Somerset 7-10 / Bali 11-14 / Tiverton 15-18 / Nocturne 19-24 / Leather Piping 25-26

Brush Fringe 27-28 / St.Moritz 29-30 / Veranda 31-32 / Encore 33-34 / Technical Specs 35-44

INFINITE CREATIVE POSSIBILITIES

Samuel & Sons is renowned for its visionary approach in the world of passementerie, with exclusive broad color lines of basics and breathtaking traditional, transitional and contemporary collections, constructed with novel combinations of materials.

This season's introductions are no exception in the diversity of styles, constructions and materials, further expanding our repertoire:

Bali: a comprehensive collection of jute, cotton and linen tassel and beaded fringes, bullions, beaded macramé and embroidered borders, twisted cords, tufts and tiebacks all focusing on constructions that accentuate the textural richness of natural fibers.

Tiverton: a classical collection of passementerie that houses 11 nuanced colors combinations, each with a mélange, tri-color rotation within documentary-inspired cords, borders and fringes.

Nocturne: Explores unique materials inspired by the landscape of the night sky and that are reminiscent of otherworldly luminosity. Novel velvet constructions, raised embroidery, origami folding, laser cutting, hand-sewn and hand-tied beads, and intricate weaving techniques were used to render the collection's 22 unique patterns.

Somerset: evokes purity and understated elegance through dimensional, naturally inspired passementerie, woven with a strié of finest linen and cotton yarns combining striés of neutral and earthen tones.

As the authority in the world of

passementerie, Samuel & Sons continues to forge the path in redefining trim that has resonated across the globe. Each landmark collection provides greater diversity to enhance people's lives by inspiring them with endless creative possibilities.

La renommée de Samuel & Sons repose sur son approche visionnaire du monde de la passementerie, avec de nombreuses collections traditionnelles et contemporaines, déclinées dans des gammes de couleurs exclusives et mariant différents matériaux en des combinaisons novatrices.

Les nouveautés de cette saison ne font pas exception à cette règle avec une diversité de styles, constructions et matériaux, qui élargit à nouveau notre répertoire:

Bali: une collection complète de passementerie en jute, lin et coton où les structures de tissage viennent sublimer la beauté naturelle des fibres : franges mèches, franges moulinées, franges perles brodées main, galons larges brodés, embrasses câblés et embrasses à glands.

Tiverton: une collection classique déclinée dans 11 nuances de tons, chacune dans une alternance tricolore de combinaisons de couleurs inspirée d'archives : galons, franges et câblés.

Nocturne: Explorez des matériaux uniques tirant leur inspiration du ciel nocturne et rappelant la luminosité d'un autre monde. De nouvelles constructions en velours, des broderies en relief, des pliages en origami, des découpes au laser, des perles cousues et nouées main et des techniques de tissage complexes ont donné naissance aux 22 modèles uniques de cette collection.

Somerset: inspirée par la nature et tissée à partir des meilleurs fils de lin et de coton, cette collection évoque l'élégance et la pureté grâce à une diversité et richesse de motifs et tissages exceptionnels.

Fort d'une expertise de près d'un siècle le monde de la passementerie, Samuel & Sons continue d'ouvrir la voie en redéfinissant une passementerie qui résonne à travers le monde. Chaque nouvelle collection emblématique offre une plus grande diversité qui améliore la vie des gens en leur inspirant une infinité de possibilités créatives.

*Antoinette Embroidered Border/
Antoinette Galon Brodé in Tearose*



ANTOINETTE COLLECTION

Antoinette is a curated collection of sumptuously embroidered floral linen borders. Reminiscent of 18th century French embroidery, this botanical pattern incorporates colorful garlands of flowers and leaves such as those that embellished regal apparel during Louis XV's reign.

Antoinette est une collection raffinée de galons de lin floraux somptueusement brodés. Les détails du motif botanique du galon Antoinette tire son inspiration des broderies françaises du XVIIIème siècle, en y incorporant des guirlandes de fleurs et de feuilles, semblables à celles qui ornaient les vêtements royaux du règne de Louis XV.



*Antoinette Embroidered Border/
Antoinette Galon Brodé in Sapphire*



SOMERSET COLLECTION

Somerset evokes purity and understated elegance through its selection of patterns, weave structures, strié and pairings of colors.

Somerset évoque la pureté et l'élégance discrète à travers sa sélection de motifs, de structures de tissage, de striés et de combinaisons de couleurs.



*Somerset Ikat Border/
Somerset Galon Ikat in Driftwood*

1. **Somerset Openwork Braid**/ Somerset Galon Ajouré in Slate and **Bali Linen Tuft**/ Bali Bouffette Lin in Flax
2. Shown from top to bottom: **Somerset Strié Braid**/ Somerset Galon in Driftwood, Oyster and Flax
3. **Somerset Beaded Fringe**/ Somerset Frange Perles in Oyster





Shown from top to bottom:
Somerset Ikat Border/
Somerset Galon Ikat in Olive,
Heather Grey, Flax, Willow and Rain
and **Somerset Strié Gimp**/
Somerset Lézarde in Heather Grey



BALI COLLECTION

Captivated by the tranquility of Bali, the Samuel & Sons Design studio created a collection of trimmings influenced by the aesthetic of the lush natural environment.

Fasciné par la tranquillité de Bali, le studio de Design Samuel & Sons a créé une collection de passementerie influencée par l'esthétique luxuriante de la nature de ce lieu.



Shown above:

Bali Jute Cable Holdback/ Bali Embrasse Câblé Toile de Jute in Burlap, **Bali Linen Cable Holdback**/ Bali Embrasse Câblé Lin in Flax, **Bali Cotton Cable Holdback**/ Bali Embrasse Câblé Coton in Cream, **Bali Cotton Key Tassel**/ Bali Gland de Clé Coton in Cream, **Bali Linen Key Tassel**/ Bali Gland de Clé Lin in Flax, **Bali Jute Key Tassel**/ Bali Gland de Clé Toile de Jute in Burlap, **Bali Cotton Tuft**/ Bali Bouffette Coton in Cream, **Bali Linen Tuft in Flax**/ Bali Bouffette Lin, **Bali Jute Tuft**/ Bali Bouffette Toilein de Jute Burlap and **Bali Linen Double Tassel Tieback**/ Bali Embrasse 2 Glands Lin in Flax



Bali Jute Triple Beaded Fringe/
Bali Frange Triple Perles Toile de Jute
in Burlap

1. Shown from top to bottom: **Alaya Jute Border**/ Alaya Galon Toile de Jute in Flax and Cream and **Bali Cotton Key Tassel**/ Bali Gland de Clé Coton in Cream

2. Shown from left to right: **1/4" Bali Jute Cord with Tape**/ Bali Cablé sur pied Toile de Jute, **Sankara Jute Border**/ Sankara Galon Toile de Jute, **Bali Jute Skirt Fringe**/ Bali Effilé Toile de Jute and **Bali Jute Border**/ Bali Galon Toile de Jute in Burlap, **Bali Cotton Tuft**/ Bali Bouffette Coton in Cream and **Bali Linen Triple Beaded Fringe**/ Bali Frange Triple Perles Lin in Flax

3. From top to bottom: **Sanur Border**/ Sanur Galon in Burlap and Cream

4. Shown from top to bottom: **Bali Jute Tassel Fringe**/ Bali Frange Mèches Toile de Jute in Burlap, **Uma Embroidered Border**/ Uma Galon Brodé in Cream and **Bali Jute Tassel Skirt Fringe**/ Bali Frange Mèches Toile de Jute in Burlap

“The Bali collection evokes tranquility and finds beauty in the inherent textural richness of the natural fibers from which it is woven and intricately embellished.”

“La collection Bali évoque la tranquillité et trouve la beauté dans la richesse texturale de fibres naturelles à partir desquelles elle est finement tissée et ornée.”

– Marisa Gutmacher,
Executive Design Director







*Tiverton Pleated Border/
Tiverton Galon Plissé in Charcoal*

TIVERTON COLLECTION

Tiverton is a classical collection of passementerie composed of a pear bead fringe, twill borders, crepe cords and fan edge in a repertoire of sophisticated hues.

Tiverton est une collection traditionnelle de passementerie composée d'une frange de perles poires, de galons structurés, de câblés bouclés et d'une giselle, le tout décliné dans une gamme de teintes sophistiquées.



Shown from top to bottom:
Tiverton Border/ Tiverton Galon
and **Tiverton Fan Edge**/ Tiverton
Giselle in Ecrú, **Bali Linen Tuft**/
Bali Bouffette Lin in Flax and **Tiverton**
Pleated Border/ Tiverton Galon
Plissé in Charcoal and Ecrú

From top to bottom:
Tiverton Border/ Tiverton Galon
and **Tiverton Beaded Fringe**/
Tiverton Frange Perles in Rosewater





Shown from top to bottom:
Tiverton Pleated Border/
Tiverton Galon Plissé in Rosewater
and **Tiverton Fan Edge**/
Tiverton Giselle in Shell



Shown from top to bottom:

Equinox Embroidered Border/ Equinox Galon Brodé in Titanium layered with **Cambridge Metallic Cord with Tape**/ Cambridge Câblé sur Pied Métallique Sur Pied in Antique Gold, **Solstice Embroidered Border**/ Solstice Galon Brodé in Gold and **Flame Embroidered Border**/ Flame Galon Brodé in Bronze layered with **Cambridge Metallic Braid**/ Cambridge Galon Métallique in Antique Gold



*Andromeda Embroidered Border/
Andromeda Galon Brodé in Bronze*

NOCTURNE COLLECTION

A celestial collection of embroidered, laser cut, hand-beaded and appliqué borders from the artistic collaboration of the Samuel & Sons Design Studio and a group of distinctive artisans.

Une collection céleste de galons larges brodés, découpés au laser, perlés et brodés main, fruit de la collaboration artistique du studio de Design Samuel & Sons et d'un groupe d'artisans distingués.

TALKING TRIM WITH
**MARISA
 GUTMACHER:**
 THE NOCTURNE COLLECTION



About Marisa Gutmacher
 Samuel & Sons Executive Design Director

As Executive Design Director for Samuel & Sons, Marisa is recognized as one of the industry's foremost trimmings designers. Having designed countless collections of globally-distributed trimmings in the high end market over the past 25 years with a dual degree in Interior Architecture, Marisa has been described as a visionary. Among her dozens of distinguished collections designed for Samuel & Sons over the past decade is the Optix Collection, which won for Textiles + Fabrics Innovation in the 12th Annual Hospitality Design (HD) Awards. Her trimmings have been featured in Architectural Digest, Elle Decor, House Beautiful, Interior Design, Traditional Home, Veranda and World of Interiors.

Directrice du Studio de Design Samuel & Sons, Marisa est considérée comme l'un des principaux designers dans le domaine de la passementerie. Doublement diplômée en Architecture d'Intérieur, Marisa a conçu, au cours des 25 dernières années, d'innombrables collections de passementerie distribuées dans le monde entier sur le marché haut de gamme. Son sens de l'esthétisme, son extraordinaire capacité à apporter une touche de modernité aux passementeries traditionnelles lui confèrent cette approche visionnaire inégalée.

What was the inspiration behind the Nocturne Collection? I was fascinated by the landscape of the night sky and unique materials reminiscent of otherworldly luminosity. Those with reflective surfaces, such as metal yarns and beads, allowed me to create patterns inspired by the radiance of constellations. Nocturne's color story focuses on metals and crystals such as Bronze, Titanium, Topaz and Obsidian.

What is your design process like? The design process is never linear; it starts with a concept based on form, function and materiality. The source of inspiration for trimmings can begin with a particular fiber or construction, pattern, historical reference, or something in apparel, art, nature, architecture, a lifestyle or a trend. My product development process is one of inquiry and discovery. Where I begin evolves into something else through adjustments to pattern, construction, scale and color placement. Collaborating with remarkable weavers and craftsmen around the globe, and with a deep understanding of the language of classical Passementerie, I'm constantly transforming what "was" into what's relevant for the 21st century.

What techniques generated the Nocturne constructions? Novel velvet constructions

mixed with metallic yarns, raised embroidery, origami folding, laser cutting, hand-sewn and hand-tied beads, and intricate weaving techniques were used to render Nocturne's 22 unique patterns.

What other details make this collection unique? In Nocturne, we explored the juxtaposition of reflective and matte surfaces, often embroidering with metallic yarns and beads on matte linen grounds. Surfaces and materials reflect light differently and these variations yield a dynamic visual experience.



Shown from left to right:
Nova Beaded Border/
Nova Galon Perles
in Bronze and
Galaxy Beaded Border/
Galaxy Galon Perles in
Crystal and Titanium





What is your favorite style in this collection? Halo Beaded Border is an ethereal border of glistening ombre beaded circles cascading across a satin ground. Halo marries a contemporary pattern with the time-honored technique of hand beading. I love the harmony between colors within iridescent beads and its satin ground, as well as how they hover above the surface, each emulating a burst of light.

Quelle a été votre inspiration pour la collection Nocturne? J'étais fascinée par le paysage du ciel la nuit et les matériaux uniques qui rappellent cette luminosité d'un autre monde. Ces matériaux avec des surfaces réfléchissantes, comme les fils de métal et les perles, m'ont permis de créer des motifs inspirés par l'éclat des constellations. L'histoire des couleurs de Nocturne évolue autour des métaux et les cristaux tels que le bronze, le titane, la topaze et l'obsidienne.

Quel est votre processus de design? Le processus de conception n'est jamais linéaire ; il commence par un concept basé sur la forme, la fonction et la matérialité. La source d'inspiration pour les passementeries peut commencer par une fibre ou une construction particulière, un motif, une référence historique, ou quelque chose dans l'habillement, l'art, la nature, l'architecture, un style de vie ou une tendance. Mon processus de développement de produits passe par la recherche et la découverte. Je commence à un endroit qui évolue en quelque chose d'autre par le biais d'ajustements au motif, à la construction, à l'échelle et à la disposition des couleurs. Collaborer avec de remarquables tisserands et artisans du monde entier et avoir une profonde compréhension du langage de la passementerie classique, me permet de transformer constamment ce qui « était » en ce qui est pertinent au 21ème siècle.

Quelles techniques ont généré les constructions de Nocturne? Des constructions novatrices en velours mélangées à des fils métalliques, des broderies en relief, des pliages en origami, des découpes au laser, des perles cousues et nouées main et des techniques de tissage complexes ont permis de réaliser les 22 motifs uniques de Nocturne.

Quels autres détails rendent cette collection unique? Dans Nocturne, nous avons exploré la juxtaposition de surfaces réfléchissantes et mates, brodant des fils métalliques et des perles sur des motifs en lin mat. Les surfaces et les matériaux réfléchissent la lumière différemment et ces variations révèlent une expérience visuelle dynamique.

Quel est votre style préféré dans cette collection? Le galon perles Halo est un galon éthéré de cercles perlés d'ombrés scintillants en cascade sur un fond de satin. Halo marie un motif contemporain à la technique ancestrale du perlage à la main. J'aime l'harmonie entre les couleurs des perles iridescentes et le fond satiné, ainsi que la façon dont elles flottent au-dessus de la surface, comme un éclat de lumière.



*Umbra Embroidered Border/
Umbra Galon Brodé in Bronze*



*Shown clockwise from top:
Galaxy Beaded Border/
Galaxy Galon Perles in
Titanium and Crystal,
**Solstice Embroidered
Border/** Solstice Galon
Brodé in Gold, **Nebula
Beaded Border/** Nebula
Galon Brodé in Topaz and
**Equinox Embroidered
Border/** Equinox Galon
Brodé in Titanium
layered with **Cambridge
Metallic Cord with Tape/**
Cambridge Câblé Sur Pied
Métallique in Antique Gold*

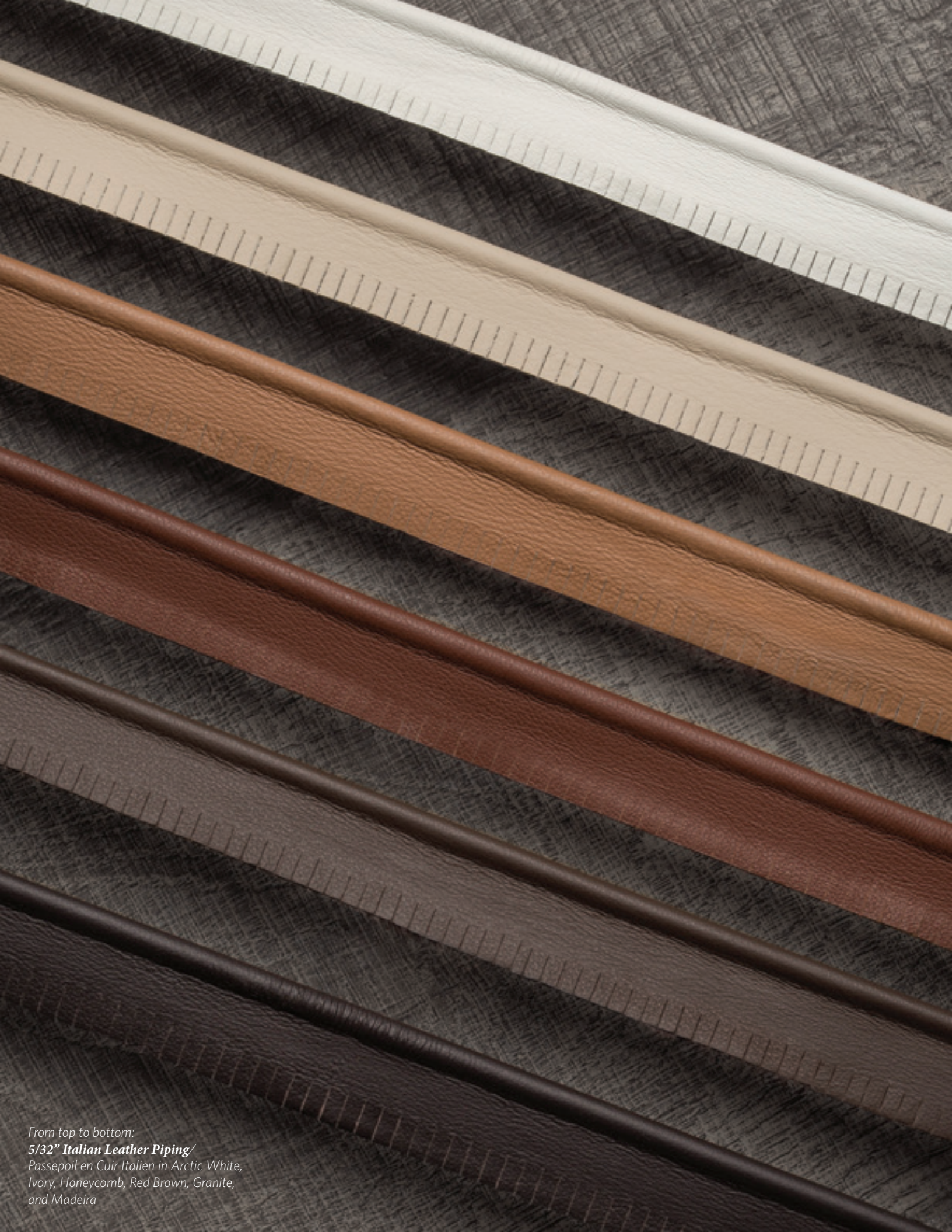


From top to bottom:
7/32" Italian Leather Piping/
Passepoil en Cuir Italien in Pumpkin,
Butterfield and Commodore


LEATHER PIPING COLLECTION

A collection of the finest italian leather piping in a comprehensive selection of shades.

Une collection de passepoils en cuir italien de la plus haute qualité dans un large choix de teintes.



From top to bottom:
5/32" Italian Leather Piping/
Passepoil en Cuir Italien in Arctic White,
Ivory, Honeycomb, Red Brown, Granite,
and Madeira



Shown from left to right: **Aria Brush Fringe**/
Aria Frange Mousse in Blush, Oro and Emerald

BRUSH FRINGE COLLECTION

SECOND EDITION

This new collection houses a comprehensive selection of our most distinctive brush fringes from notable collections such as Aurelia, Paddington, La Terre, Céline, Oberon, Lucente, Inca and Harbour. Fibers vary from lustrous silk and rayon to dry linen and wool. We are delighted to debut a new pattern in this collection: the opulent 1" Aria Silk Brush Fringe, which blooms into 180 degrees.

Cette nouvelle collection regroupe une sélection complète des franges mousse de nos collections Aurelia, Paddington, La Terre, Céline, Oberon, Lucente, Inca et Harbour. Les fibres vont de la soie et de la rayonne lustrées au lin sec et à la laine. Un nouveau modèle vient compléter cette collection : l'opulente frange mousse en soie Aria de 2,54 cm, qui s'épanouit à 180 degrés.



Shown clockwise from top left: **Céline Ombré Brush Fringe**/ Céline Frange Mousse Ombrée in Geyser, **Aurelia Brush Fringe**/ Aurelia Frange Mousse in Aquamarine, **Aria Silk Brush Fringe**/ Aria Frange Mousse en Soie in Oro and Wedgewood, **1" Délicat Silk Moss Fringe**/ Délicat Frange Mousse en Soie in Seafoam and Gold, **1" Délicat Silk Moss Fringe**/ Délicat Frange Mousse en Soie 2.54 cm in French Blue, and **Aria Silk Brush Fringe**/ Aria Frange Mousse en Soie in Blush



Shown from top to bottom: **Alpina Velvet Border**/ Alpina Galon Large en Velours in Maple, **Harbour Beaded Braid**/ Harbour Galon Perles in Flax and **Reine Velvet Border**/Reine Galon Large en Velours in Maple

ST.MORITZ COLLECTION

An exquisite collection of sophisticated borders in which pattern is achieved through a combination of appliqué and embroidery.

Une collection extraordinaire de galons larges haut de gamme dont les motifs sont obtenus grâce à une combinaison d'applications et de broderies.



Shown clockwise from top left: **Moritz Velvet Border**/ Moritz Galon Large en Velours in Gold, **Botanico Appliqué Border**/ Botanico Galon Large d'Application in Ivory and Cashmere, **Giardino Appliqué Border**/ Giardino Galon Large d'Application in Creme, **Kempinski Appliqué Border**/ Kempinski Galon Large d'Application in Linen, Eggshell, and Ecrú, **Carlton Appliqué Border**/ Carlton Galon Large d'Application in Oatmeal and Dove, **Reine Velvet Border**/ Reine Galon Large en Velours in Maple, and **Laudinella Appliqué Border**/ Laudinella Galon Large d'Application in Eggshell, Dove, and Oyster

Shown from left to right: **Veranda Linen Brush Fringe**/ Veranda Frange Mousse de Lin, **Veranda Linen Beaded Fringe**/ Veranda Frange Perles en Lin, and **Veranda Linen Cord with Tape**/ Veranda Câblé Sur Pied en Lin in Delphinium



VERANDA COLLECTION

Inspired by garden and floral hues, Veranda is a collection of traditional linen passementerie.

Inspirée par les tons floraux des jardins, Veranda est une collection de passementerie traditionnelle en lin.



Shown clockwise from top left: **Veranda Cord with Tape**/ Veranda Câblé Sur Pied in Chardon Bleu, **Ombre Border**/ Galon Ombré in Chardon Bleu and Jonquille, **Linen Brush Fringe**/ Frange Mousse en Lin in Geranium, **Linen Crete**/ Galon Guipé en Lin in Geranium and Delphinium, **Linen Appliqué Border**/ Galon Large d'Application en Lin in Antique Coral, Petal, Leaf, and Oro, **Linen Brush Fringe**/ Frange Mousse de Lin in Chardon Bleu, **Linen Crete**/ Galon Guipé de Lin in Chardon Bleu, and **Linen Beaded Fringe**/ Frange Perles en Lin in Jonquille and Chardon Bleu



LORI WEITZNER

As principal and creative director of her own New York-based firm, Lori Weitzner has achieved international renown with designs that cross a multitude of disciplines.

In addition to her role as a product designer, Lori is a manufacturer of artful wallcoverings and textiles under her own brand, Weitzner Limited.

She is the recipient of numerous awards including the esteemed Innovation Awards, Best of Neocon and Good Design Awards and Lori's work has recently been added to the permanent collection of Cooper-Hewitt, National Design Museum and has been exhibited at London's Victoria and Albert Museum and Montreal's Musée Décoratifs. She is most recently the author of the book "ODE TO COLOR" which celebrates color and all its power, moods and associations.

Lori Weitzner, fondatrice et Directrice de Création de sa propre agence basée à New York, a acquis une renommée internationale grâce à ses créations qui couvrent une multitude de disciplines.

Outre ses activités de créatrice, Lori fabrique et distribue également des revêtements muraux et des tissus sous sa propre marque, Weitzner Limited.

Lori a été honorée par plus de vingt prix et distinctions dont le Best of Neocon, les Good Design Awards et les Innovations Awards. Plusieurs de ses créations ont récemment été ajoutées à la collection permanente du Cooper-Hewitt National Design Museum et ont été exposées au Victoria and Albert Museum de Londres et au Musée des Arts Décoratifs de Montréal. Plus récemment, son livre « ODE A LA COULEUR » nous invite à voyager à travers les mondes des couleurs.

LORI WEITZNER
for SAMUEL & SONS



ENCORE COLLECTION

BY LORI WEITZNER

Lori Weitzner proudly presents the Encore Collection for Samuel & Sons, a contemporary interpretation of Weitzner's first passementerie collection; composed of exquisitely sophisticated pleated borders.

Lori Weitzner présente sa Collection Encore pour Samuel & Sons, une interprétation contemporaine de sa première collection de passementerie composée de galons plissés haut de gamme.



Shown left to right: **Cabaret Pleated Metallic Gimp**/ Cabaret Lézarde Plissée Métallique in Brushed Silver, **Merengue Pleated Metallic Border**/ Merengue Galon Large Plissé Métallique in Seafoam, **Sashay Appliqué Border**/ Sashay Galon Large d'Application in Sail, **Virtuoso Appliqué Border**/ Virtuoso Galon Large d'Application in Macadamia, **Opaline Cultured Pearl Fringe**/ Opaline Frange Perles Nacrées in Nacre, **Promenade Pleated Wool Border**/ Promenade Galon Large Plissé en Laine in Atlantic, **Merengue Pleated Metallic Border**/ Merengue Galon Large Plissé Métallique in Admiral, **Tarantella Pleated Border**/ Tarantella Galon Large Plissé in Mediterranean and Skylark, **Merengue Pleated Metallic Border**/ Merengue Galon Large Plissé Métallique in Bleached Coral, **Tarantella Pleated Border**/ Tarantella Galon Large Plissé in Lilac, **Virtuoso Appliqué Border**/ Virtuoso Galon Large d'Application in Cove, **Minuet Pleated Border**/ Minuet Galon Large Plissé in Harbor and Spring, **Promenade Pleated Wool Border**/ Promenade Galon Large Plissé en Laine in Prune, **Merengue Pleated Metallic Border**/ Merengue Galon Large Plissé Métallique in Mulberry, and **Virtuoso Appliqué Border**/ Virtuoso Galon Large d'Application in Iris



Antoinette Collection

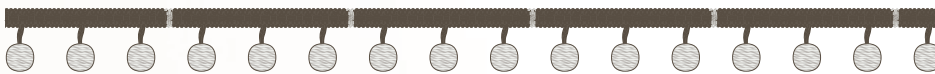


BT-59023 4.5" (11.7cm)

Embroidered Border/Galon Large Brodé

Available in: Ecrú, Tearose, Antique, Fog, Sapphire

Somerset Collection



TF-59032 1.75" (44mm)

Beaded Fringe/Frange Perles

Available colors: Oyster, Flax,
Driftwood, Willow, Rain,
Heather Grey, Slate, Terra, Olive



GB-59026 1/2" (13mm)

Strié Gimp/Lézarde

Available colors: Oyster, Flax,
Driftwood, Willow, Rain, Heather
Grey, Slate, Terra, Olive



CT-59027 3/4" (19mm)

Cord with Tape/Cablé sur Pied

Available colors: Oyster, Flax,
Driftwood, Willow, Rain, Heather
Grey, Slate, Terra, Olive



GB-59028 1.13" (29mm)

Strié Braid/Galon

Available colors: Oyster, Flax,
Driftwood, Willow, Rain, Heather
Grey, Slate, Terra, Olive



BT-59031 1.5" (38mm)

Heathered Linen Border/

Galon Géométrique

Available colors: Flax, Driftwood,
Willow, Rain, Heather Grey, Slate,
Terra, Olive



BT-59030 2.5" (64mm)

Ikát Border/Galon Ikát

Available colors: Flax, Driftwood,
Willow, Rain, Heather Grey, Slate,
Terra, Olive



GB-59029 3" (76mm)

Openwork Braid/Galon Ajouré

Available colors: Oyster, Flax,
Driftwood, Willow, Rain, Heather
Grey, Slate, Terra, Olive



Tiverton Collection



GB-59033 5/16" (8mm)
Gimp/Lézarde
 Available colors: Ecrú, Charcoal,
 Fern, Patina, Marine, Aqua, Ash,
 Ocher, Rosewater, Shell, Vermillion



CT-59043 1/4" (6mm)
Cord with Tape/Câblé sur Pied
 Available colors: Ecrú, Charcoal,
 Fern, Patina, Marine, Aqua, Ash,
 Ocher, Rosewater, Shell, Vermillion



CT-59044 5/16" (8mm)
Cord with Tape/Câblé sur Pied
 Available colors: Ecrú, Charcoal,
 Fern, Patina, Marine, Aqua, Ash,
 Ocher, Rosewater, Shell, Vermillion



GB-59034 5/8" (16mm)
Striped Gimp/Lézarde
 Available colors: Ecrú, Charcoal,
 Fern, Patina, Marine, Aqua, Ash,
 Ocher, Rosewater, Shell, Vermillion



BT-59035 3/4" (19mm)
Border/Galon
 Available colors: Ecrú, Charcoal,
 Fern, Patina, Marine, Aqua, Ash,
 Ocher, Rosewater, Shell, Vermillion



TF-59047 1.57" (40mm)
Beaded Fringe/Frange Perles
 Available colors: Ecrú, Charcoal,
 Fern, Patina, Marine, Aqua, Ash,
 Ocher, Rosewater, Shell, Vermillion



BT-59046 1.5" (38mm)
Pleated Border/Galon Plissé
 Available colors: Ecrú, Charcoal,
 Fern, Patina, Marine, Aqua, Ash,
 Ocher, Rosewater, Shell, Vermillion



FR-59045 1.25" (32mm)
Fan Edge/Giselle
 Available colors: Ecrú, Charcoal,
 Fern, Patina, Marine, Aqua, Ash,
 Ocher, Rosewater, Shell, Vermillion



BT-59042 1.7" (43mm)
Border/Galon
 Available colors: Ecrú, Charcoal,
 Fern, Patina, Marine, Aqua, Ash,
 Ocher, Rosewater, Shell, Vermillion



Bali Collection



CT-59123 1/4" (6.4mm)
1/4" (6.4mm) Jute Cord with Tape/
Cablé Sur Pied Toile de Jute
Available in: Burlap

CT-59121 1/4" (6.4mm)
1/4" (6.4mm) Cotton Cord with Tape/
Cablé Sur Pied Coton
Available in: Cream

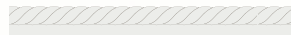
CT-59122 1/4" (6.4mm)
1/4" (6.4mm) Bali Linen Cord with Tape/
Bali Cablé Sur Pied Lin
Available in: Flax



CT-59124 3/8" (9.5mm)
3/8" (9.5mm) Cotton Cord with Tape/
Cablé Sur Pied Coton
Available in: Cream

CT-59126 3/8" (9.5mm)
3/8" (9.5mm) Jute Cord with Tape/
Cablé Sur Pied Toile de Jute
Available in: Burlap

CT-59125 3/8" (9.5mm)
3/8" (9.5mm) Bali Linen Cord with Tape/
Bali Cablé Sur Pied Lin
Available in: Flax



CT-59128 1/2" (13mm)
1/2" (13mm) Linen Cord with Tape/
Bali Cablé Sur Pied Lin
Available in: Flax

CT-59129 1/2" (13mm)
1/2" (13mm) Jute Cord with Tape/
Bali Cablé Sur Pied Toile de Jute
Available in: Burlap

CT-59127 1/2" (13mm)
1/2" (13mm) Cotton Cord with Tape/
Cablé Sur Pied Coton
Available in: Cream



GB-59089 3/4" (20mm)
Bali Linen Gimp/
Bali Galon Lin
Available in: Flax

GB-59090 3/4" (20mm)
Jute Gimp/
Galon Toile de Jute
Available in: Burlap

GB-59088 3/4" (20mm)
Cotton Gimp/
Galon Coton
Available in: Cream



GB-59080 1" (25mm)
Linen Braid/
Galon Lin
Available in: Flax

GB-59081 1" (25mm)
Jute Braid/
Galon Toile de Jute
Available in: Burlap

GB-59079 1" (25mm)
Cotton Braid/
Galon Coton
Available in: Cream



BR-59115 1" (25mm)
1" (25mm) Linen Brush Fringe/
Bali Marabout Rasé Lin
Available in: Flax

BR-59116 1" (25mm)
1" (25mm) Jute Brush Fringe/
Marabout Rasé Toile de Jute
Available in: Burlap

BR-59114 1" (25mm)
1" (25mm) Cotton Brush Fringe/
Marabout Rasé Coton
Available in: Cream



BR-59119 1.5" (38mm)
1.5" (38mm) Bali Linen Brush Fringe/
Bali Marabout Rasé Lin
Available in: Flax

BR-59120 1.5" (38mm)
1.5" (38mm) Jute Brush Fringe/
Marabout Rasé Toile de Jute
Available in: Burlap

BR-59118 1.5" (38mm)
1.5" (38mm) Cotton Brush Fringe/
Marabout Rasé Coton
Available in: Cream



BT-59098 1.5" (38mm)
Linen Border/
Bali Galon Lin
Available in: Flax

BT-59099 1.5" (38mm)
Jute Border/
Galon Toile de Jute
Available in: Burlap

BT-59097 1.5" (38mm)
Cotton Border/
Galon Coton
Available in: Cream



TF-59083 1.57" (40mm)
Linen Beaded Fringe/
Frange Perles Lin
Available in: Flax

TF-59084 1.57" (40mm)
Jute Beaded Fringe/
Frange Perles Toile de Jute
Available in: Burlap

TF-59082 1.57" (40mm)
Cotton Beaded Fringe/
Frange Perles Coton
Available in: Cream



TF-59095 2.63" (67mm)
Linen Knotted Tassel Fringe/
Bali Frange Mèches Lin
Available in: Flax

TF-59096 2.68" (68mm)
Jute Knotted Tassel Fringe/
Frange Mèches Toile de Jute
Available in: Burlap

TF-59094 2.87" (73mm)
Cotton Knotted Tassel Fringe/
Frange Mèches Coton
Available in: Cream



TF-59092 3" (75mm)
Linen Tassel Fringe/
Bali Frange Mèches Lin
Available in: Flax

TF-59093 3.23" (82mm)
Jute Tassel Fringe/
Frange Mèches Toile de Jute
Available in: Burlap

TF-59091 2.68" (68mm)
Cotton Tassel Fringe/
Frange Mèches Coton
Available in: Cream



TF-59086 3.43" (87mm)
Linen Triple Beaded Fringe/
Frange Triple Perles Lin
Available in: Flax

TF-59087 3.43" (87mm)
Jute Triple Beaded Fringe/
Frange Triple Perles Toile de Jute
Available in: Burlap

TF-59085 3.43" (87mm)
Cotton Triple Beaded Fringe/
Frange Triple Perles Coton
Available in: Cream



FR-59112 1.5" (38mm)
Linen Fan Edge/
Giselle Lin
Available in: Flax

FR-59113 1.5" (38mm)
Jute Fan Edge/
Giselle Toile de Jute
Available in: Burlap

FR-59111 1.5" (38mm)
Cotton Fan Edge/
Giselle Coton
Available in: Cream



BT-59149 2.5" (64mm)
Ayana Bouclé Border/
Ayana Galon Bouclé
Available in: Flax, Cream



BT-59148 3" (76mm)
Amandari Beaded Border/
Amandari Galon Perles
Available in: Marble



BT-59150 2.13" (54mm)
Sanur Border/
Sanur Galon
Available in: Flax, Burlap, Cream



BT-59147 3" (76mm)
Uma Embroidered Border/
Uma Galon Brodé
Available in: Flax, Cream



BT-59146 4.75" (12cm)
Alaya Jute Border/
Alaya Galon Toile de Jute
Available in: Flax, Cream



BT-59145 5.5" (14cm)
Sankara Jute Border/
Sankara Galon Toile de Jute
Available in: Burlap



RT-59144 1.57" (40mm)
Jute Tuft/Bouffette Toile de Jute
 Available in: Burlap

RT-59143 1.57" (40mm)
Linen Tuft/Bouffette Lin
 Available in: Flax

RT-59142 1.57" (40mm)
Cotton Tuft/Bouffette Coton
 Available in: Cream



KT-59130 Height: 4" (10cm), Loop: 4"(10cm)
Cotton Key Tassel/ Gland de Clé Coton
 Available in: Cream

KT-59131 Height: 4" (10cm), Loop: 4"(10cm)
Linen Key Tassel/ Gland de Clé Lin
 Available in: Flax

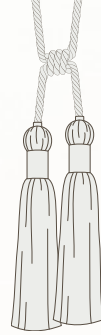
KT-59132 Height: 4" (10cm), Loop: 4"(10cm)
Jute Key Tassel/ Gland de Clé Toile de Jute
 Available in: Burlap



HB-59141 Spread: 32" (81.5 cm)
Jute Cable Holdback/
 Embrasse Câblé Toile de Jute
 Available in: Cream

HB-59140 Spread: 32" (81.5 cm)
Linen Cable Holdback/
 Embrasse Câblé Lin
 Available in: Flax

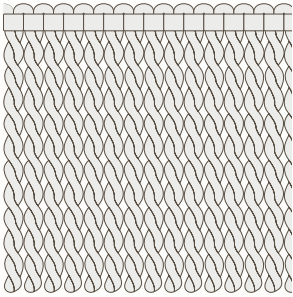
HB-59139 Spread: 32" (81.5 cm)
Cotton Cable Holdback/
 Embrasse Câblé Coton
 Available in: Burlap



TT-59213 Spread: 81, Tassel height: 35.5" (90cm)
Linen Double Tassel Tieback/
 Embrasse 2 Glands Lin
 Available in: Flax

TT-59212 Spread: 81, Tassel height: 35.5" (90cm)
Jute Double Tassel Tieback/
 Embrasse 2 Gland Toile de Jute
 Available in: Burlap

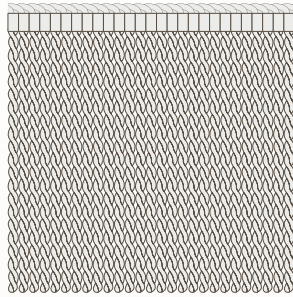
TT-59211 Spread: 81, Tassel height: 35.5" (90cm)
Cotton Double Tassel Tieback/
 Embrasse 2 Glands Coton
 Available in: Cream



BU-59138 8" (20cm)
Jute Jumbo Bullion Fringe/
 Frange Moulinée XL Toile de Jute
 Available in: Burlap

BU-59137 8" (20cm)
Linen Jumbo Bullion Fringe/
 Frange Moulinée XL Lin
 Available in: Flax

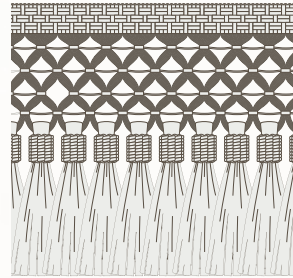
BU-59136 8" (20cm)
Cotton Jumbo Bullion Fringe/
 Frange Moulinée XL Coton
 Available in: Cream



BU-59133 8"(20cm)
Cotton Bullion Fringe/
 Frange moulinée Coton
 Available in: Cream

BU-59134 8" (20cm)
Linen Bullion Fringe/
 Frange Moulinée Lin
 Available in: Flax

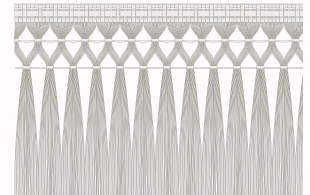
BU-59135 8" (20cm)
Jute Bullion Fringe/
 Frange Moulinée Toile de Jute
 Available in: Burlap



FR-59105 5.31" (13.5cm)
Linen Skirt Fringe/
 Bali Effilé Lin
 Available in: Flax

FR-59107 5.31" (13.5cm)
Jute Skirt Fringe/
 Effilé Toile de Jute
 Available in: Burlap

FR-59100 5.31" (13.5cm)
Cotton Skirt Fringe/Effilé Coton
 Available in: Cream



FR-59109 8" (20cm)
Linen Tassel Skirt Fringe/
 Bali Frange Mèches Lin
 Available in: Flax

FR-59110 8" (20cm)
Jute Tassel Skirt Fringe/
 Frange Mèches Toile de Jute
 Available in: Burlap

FR-59108 8" (20cm)
Cotton Tassel Skirt Fringe/
 Frange Mèches Coton
 Available in: Cream





Nocturne Collection



GF-59073 1.34" (34mm)
Meteor Glass Bead Fringe/
Meteor Frange Perles de Verre
 Available colors: Diamond,
 Titanium, Topaz, Quartz,
 Aquamarine, Crystal



BT-59060 1.57" (40mm)
Helix Beaded Border/
Helix Galon Perles
 Available colors: Obsidian



BT-59065 2" (51mm)
Galaxy Beaded Border/
Galaxy Galon Perles
 Available colors: Crystal, Titanium, Topaz



BT-59064 2.25" (57mm)
Lyra Embroidered Border/
Lyra Galon Brodé
 Available colors: Crystal, Titanium



BT-59075 2.5" (64mm)
Vela Laser Cut Border/
Vela Galon Découpe au Laser
 Available colors: Crystal



BT-59074 2.5" (64mm)
Andromeda Embroidered Border/
Andromeda Galon Brodé
 Available colors: Bronze



BT-59069 2.75" (70mm)
Halo Beaded Border/
Halo Galon Perles
 Available colors: Crystal, Titanium,
 Topaz



BT-59054 2.75" (70mm)
Flame Embroidered Border/
Flame Galon Brodé
 Available colors: Obsidian, Bronze



BT-59059 2.75" (70mm)
Horizon Velvet Border/
Horizon Galon Velours
 Available colors: Obsidian



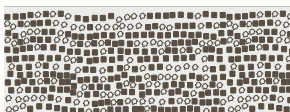
BT-59071 2.75" (70mm)
Vega Velvet Border/
Vega Galon Velours
 Available colors: Topaz, Titanium



BT-59051 2.75" (70mm)
Comet Embroidered Border/
Comet Galon Brodé
 Available colors: Crystal, Titanium



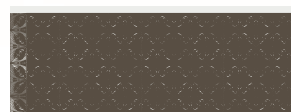
BT-59052 3.13" (80mm)
Moonlight Embroidered Border/
Moonlight Galon Brodé
 Available colors: Titanium, Crystal, Gold



BT-59072 3.13" (80mm)
Polaris Velvet Border/
Polaris Galon Velours
 Available colors: Topaz



BT-59056 3.15" (80mm)
Nova Beaded Border/
Nova Galon Perles
 Available colors: Bronze



BT-59057 3.15" (80mm)
Umbra Embroidered Border/
Umbra Galon Brodé
 Available colors: Bronze



BT-59063 3.5" (89mm)
Solstice Embroidered Border/
Solstice Galon Brodé
 Available colors: Titanium, Obsidian, Gold



BT-59061 3.5" (89mm)
Atmosphere Embroidered Border/
Atmosphere Galon Brodé
 Available colors: Topaz, Obsidian



BT-59055 3.5" (89mm)
Equinox Embroidered Border/
Equinox Galon Brodé
 Available colors: Gold, Titanium,
 Obsidian



BT-59103 3.75" (9.5cm)
Umbriel Embroidered Border/
Umbriel Galon Brodé
 Available colors: Obsidian



BT-59062 3.75" (9.5cm)
Starlight Sequined Border/
Starlight Galon Sequins
 Available colors: Titanium



BT-59053 3.75" (9.5cm)
Nebula Beaded Border/
Nebula Galon Perles
 Available colors: Topaz



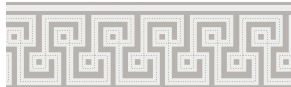
BT-59058 4" (10cm)
Cosmos Beaded Border/
Cosmos Galon Perles
 Available colors: Bronze



St.Moritz Collection



BT-58846 2.44" (62mm)
Reine Velvet Border/
Reine Galon Large en Velours
 Available colors: *Ecrú, Olive, Maple*



BT-58850 2.63" (67mm)
Laudinella Appliqué Border/
Laudinella Galon Large d'Application
 Available colors: *Dove, Seaglass, Claret, Eggshell, Gris, Mist, Navy, Oyster, Ecrú*



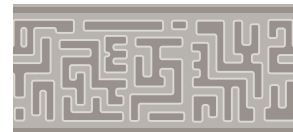
BT-58847 3.25" (83mm)
Moritz Velvet Border/
Moritz Galon Large en Velours
 Available colors: *Gold, Garnet, Onyx*



BT-58848 2.88" (73mm)
Carlton Appliqué Border/
Carlton Galon Large d'Application
 Available colors: *Oatmeal, Dove, Seaglass, Truffle, Coral, Indigo*



BT-58849 3.13" (80mm)
Kempinski Appliqué Border/
Kempinski Galon Large d'Application
 Available colors: *Ecrú, Mist, Ocher, Eggshell, Umber, Linen, Dresden Blue, Dune*



BT-58845 3.63" (9.2cm)
Alpina Velvet Border/
Alpina Galon Large en Velours
 Available colors: *Peacock, Charcoal, Olive, Maple*



BT-58851 3" (76mm)
Giardino Appliqué Border/
Giardino Galon Large d'Application
 Available colors: *Crème*



BT-58852 3" (76mm)
Botanico Appliqué Border/
Botanico Galon Large d'Application
 Available colors: *Ivory, Cashmere, Heather Grey*

Brush Fringe Collection

Second Edition



BR-57879 1" (25mm)
Oberon Brush Fringe/
Oberon Frange Mousse
 Available in: Platinum, Zinc, Bronze,
 White Gold, Goldleaf, Antique Gold



BR-58862 1" (25mm)
Aria Silk Brush Fringe/
Aria Frange Mousse en Soie
 Available in: Ecrú, Blush, Oro, Indigo,
 Wedgewood, Ruby, Vapor, Emerald



BR-57482 1" (26mm)
La Terre Brush Fringe/
La Terre Frange Mousse
 Available in: Snow, Canvas, Dune, Sea
 Mist, Flax, Pebble



983-37195 1" (25mm)
Délicat Silk Moss Fringe/
Délicat Frange Mousse en Soie
 Available in: Sand, Cream, Pewter, Sage,
 Seafoam, Gold, Crimson, Green, White,
 French Blue



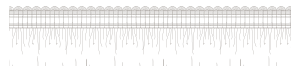
BR-57896 1" (25mm)
Inca Brush Fringe/
Inca Frange Mousse
 Available in: Crème, Mesa, Limestone,
 Agave, Fog, Avocado, Charcoal,
 Midnight, Azul, Vermillion, Verde,
 Rainforest



BR-57084 1.7" (43mm)
Céline Ombré Brush Fringe/
Céline Frange Mousse Ombrée
 Available in: Ecrú, Mushroom, Slate,
 Fig, Geyser, Ink, Poppy, Dahlia



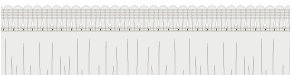
983-39889 1.75" (45mm)
Paddington Wool Brush Fringe/
Paddington Frange Mousse en Laine
 Available in: Cashew, Buckskin, Scottish
 Plaid, Java, Marakesh, Flannel Gray,
 Angora, King's Court, Tuscan Red, Pecan,
 Argyle, Lagoon



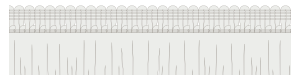
BR-58295 1.75" (44mm)
Chevalerie Brush Fringe/
Chevalerie Frange Mousse
 Available colors in all styles: Pétales,
 Bordeaux, Macaron, Oro, Jardin,
 Marzipan, Argent, Crème, Bleu,
 Amande, Vert



983-54000 1.75" (45mm)
Lucente Brush Fringe/
Lucente Frange Mousse
 Available in: Antique Gold, Platinum,
 Antique, Copper, Antique Silver



983-56509 2" (50mm)
Harbour Linen Brush Fringe/
Harbour Frange Mousse
 Available in: Sail, Sand Dune, Flax, Sky,
 Sea Creast, Aqua, Kelp, Lobster, Navy, Cloud, Ebony



983-56131 2" (50mm)
Aurelia Brush Fringe/
Aurelia Frange Mousse
 Available in: Chocolate, Tangerine, Aquamarine, Apple
 Green, Jewel, Mica, Wisteria, Loden, Fleur, Sage, Surf,
 Sapphire, Amethyst, Bisque, Shell, Wedgewood, Honey,
 Gris, Charcoal/Citron, Ivory, Tea, Bordeaux/Gold,
 Sienna, Onyx, Lemon, Beaujolais

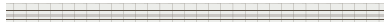


Encore Collection

by Lori Weitzner



979-37483 1" (25mm)
Opaline Cultured Pearl Fringe/
Opaline Frange Perles Nacrées
 Available colors: Nacre



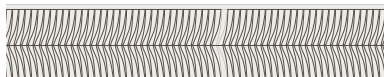
GB-58801 0.69" (17mm)
Cabaret Pleated Metallic Gimp/
Cabaret Lézarde Plissée Métallique
 Available colors: Brushed Silver, Gold Dust, Rosé



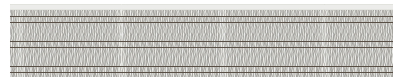
BT-58842 1.75" (44mm)
Promenade Pleated Wool Border/
Promenade Galon Large Plissé en Laine
 Available colors: Pebble, Shell, Atlantic, Prune, Café, Graphite, Elk



BT-58841 2" (51mm)
Tarantella Pleated Border/
Tarantella Galon Large Plissé
 Available colors: Ivory, Skylark, Parchment, Mediterranean, Moonstone, Lilac, Warm Sand, Topaz, Dusk, Custard, Sprout



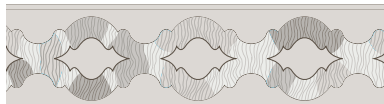
BT-58799 2.25" (57mm)
Minuet Pleated Border/
Minuet Galon Large Plissé
 Available colors: Arctic, Bone, Harbor, Slate, Spring, Ginger, Tobasco, Latte



BT-58797 2.5" (64mm)
Merengue Pleated Metallic Border/
Merengue Galon Large Plissé Métallique
 Available colors: Tide Water, Admiral, Garden, Seafoam, Mulberry, Bleached Coral



BT-58795 2.25" (57mm)
Sashay Appliqué Border/
Sashay Galon Large d'Application
 Available colors: Sail, Alabaster, Heather, Silver Lining



BT-58794 3" (76mm)
Virtuoso Appliqué Border/
Virtuoso Galon Large d'Application
 Available colors: Iris, Macademia, Cove, Armor, Desert Bloom



Veranda Collection



CT-58855 7/16" (11mm)

Linen Cord with Tape/

Câblé Sur Pied en Lin

Available colors: Chardon Bleu, Waterlily, Silver Birch, Delphinium, Jonquille, Hydrangea, Tea Rose, Hibiscus, Wisteria, Geranium, Goldenrod, Narcisses



GB-58854 1" (25mm)

Linen Crete/

Galon Guipé en Lin

Available colors: Chardon Bleu, Waterlily, Silver Birch, Delphinium, Jonquille, Hydrangea, Tea Rose, Hibiscus, Wisteria, Geranium, Goldenrod, Narcisses



BR-58857 1" (25mm)

Linen Brush Fringe/

Frangé Mousse en Lin

Available colors: Chardon Bleu, Waterlily, Silver Birch, Delphinium, Jonquille, Hydrangea, Tea Rose, Hibiscus, Wisteria, Geranium, Goldenrod, Narcisses



BT-58858 1.5" (38mm)

Ombré Border/

Galon Ombré

Available colors: Chardon Bleu, Waterlily, Silver Birch, Delphinium, Jonquille, Hydrangea, Tea Rose, Hibiscus, Wisteria, Geranium, Goldenrod, Narcisses



BT-58856 2.56" (65mm)

Linen Appliqué Border/

Galon Large d'Application en Lin

Available colors: Wisteria, Narcisses, Petal, Robin's Egg, Hyacinth, Pebble, Oro, Leaf, Antique Coral



TF-58853 3.5" (89mm)

Linen Beaded Fringe/

Frangé Perles en Lin

Available colors: Chardon Bleu, Waterlily, Silver Birch, Delphinium, Jonquille, Hydrangea, Tea Rose, Hibiscus, Wisteria, Geranium, Goldenrod, Narcisses



Shown from left to right:
Veranda Linen Crete/ Galon Guipé
en Lin and **Linen Beaded Fringe**/
Franges Perles en Lin in Wisteria

USA 212.704.8000
EUROPE +44.020.7351.5153
SAMUELANDSONS.COM



The Perfect
Match

SAMUEL & SONS IS TRIM.

samuelandsons.com

